



SUSTAINABLE ENERGY COMMUNITIES

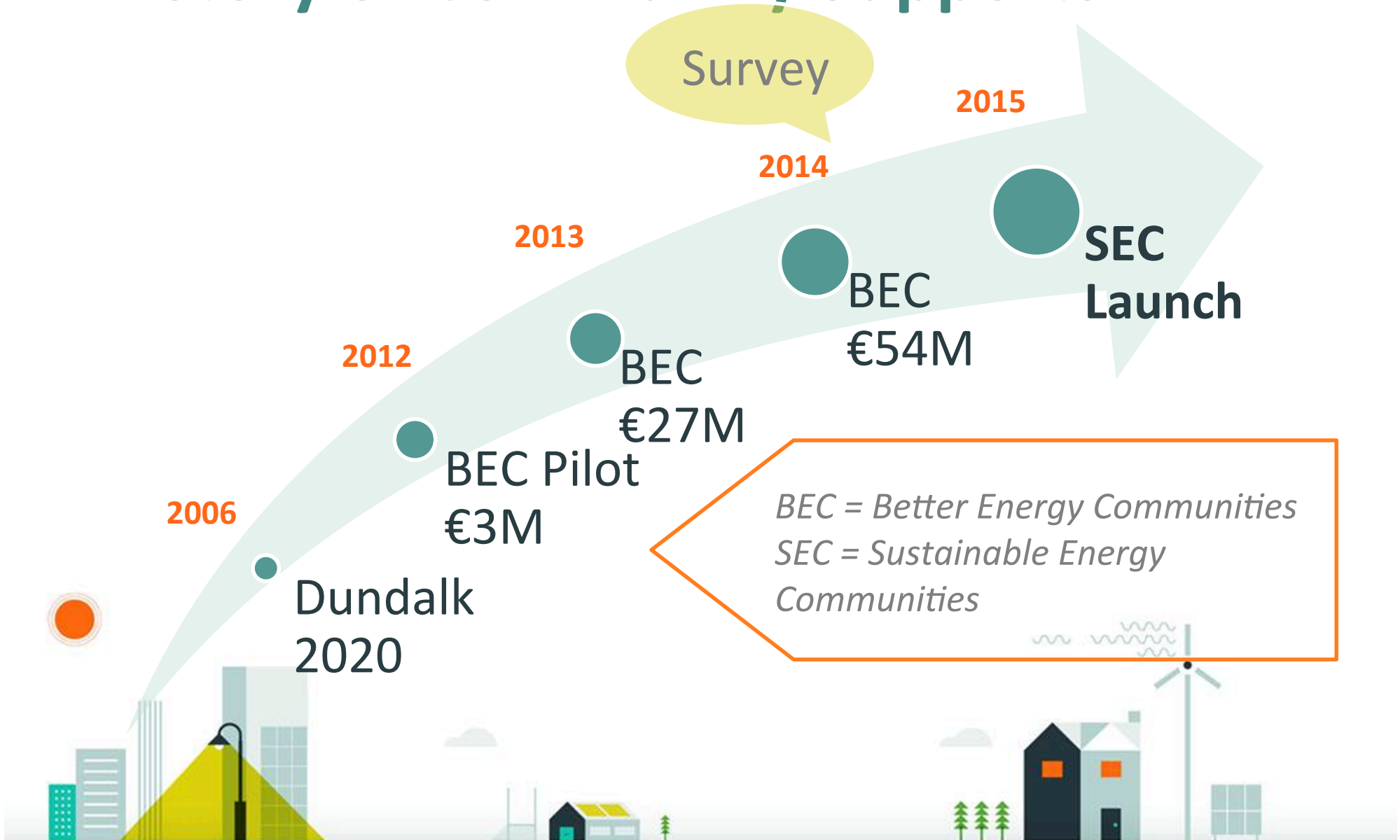


# Building Communities in Ireland

## Testing what works



# A history of Community Supports



# 2014 Survey -Motivating Factors

80%

- Need to reduce energy spend and accessing funding

61%

- Community development fund for future works

17%

- More stringent national standards and legislation



# Key Benefits

“Promotion of energy efficiency measures and renewable technologies among general public **in the community area**”

“**Access to expertise** which most of the applicants would otherwise lack”

‘Ability to deliver large scale projects that would **never go ahead** without co-funding from multiple partners’

“Communities **learning from each other** and getting expert advice”



# Lessons Learnt

## Motivation

- level of savings and payback were a surprise

## Communication

- keeping communication lines open with partners

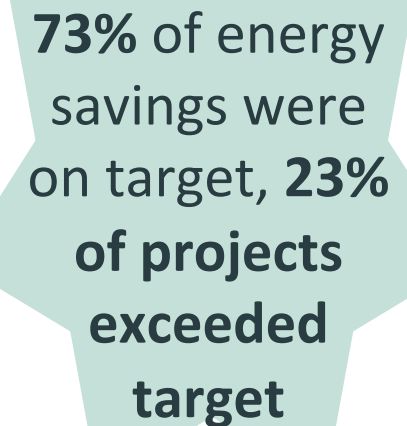
## Teamwork

- importance of being organised and early engagement with stakeholders

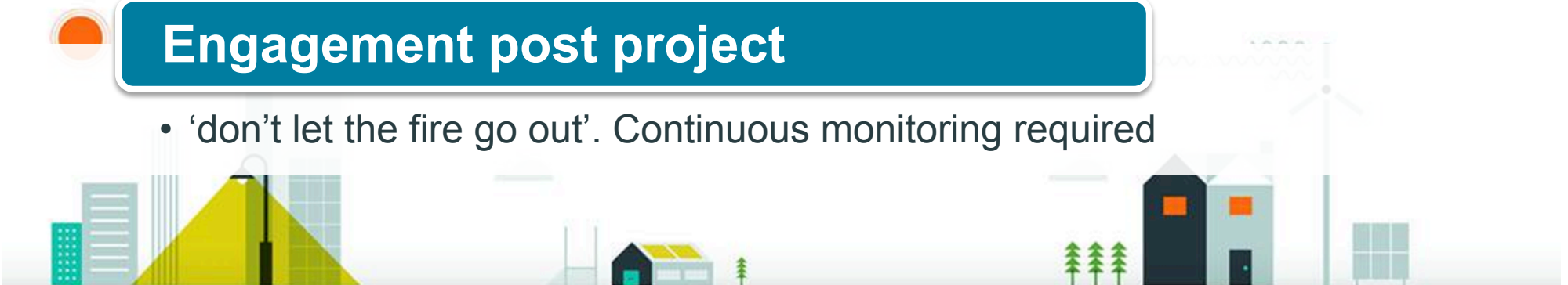


## Engagement post project

- 'don't let the fire go out'. Continuous monitoring required



**73%** of energy savings were on target, **23%** of projects exceeded target



# Impact in the Community

*After project was complete, what benefits have the highest impact?*

67%

- enabling **better community services** through improved building comfort

62%

- Achieving **energy savings**

57%

- Achieving **financial savings**

33%

- Influencing **behavioural change** and increasing community engagement



# Sustainable Energy Communities





# Sustainable Energy Communities

**A Sustainable Energy Community (SEC)** is a community in which everyone works together to develop a sustainable energy system for the benefit of the community.

This is achieved by:

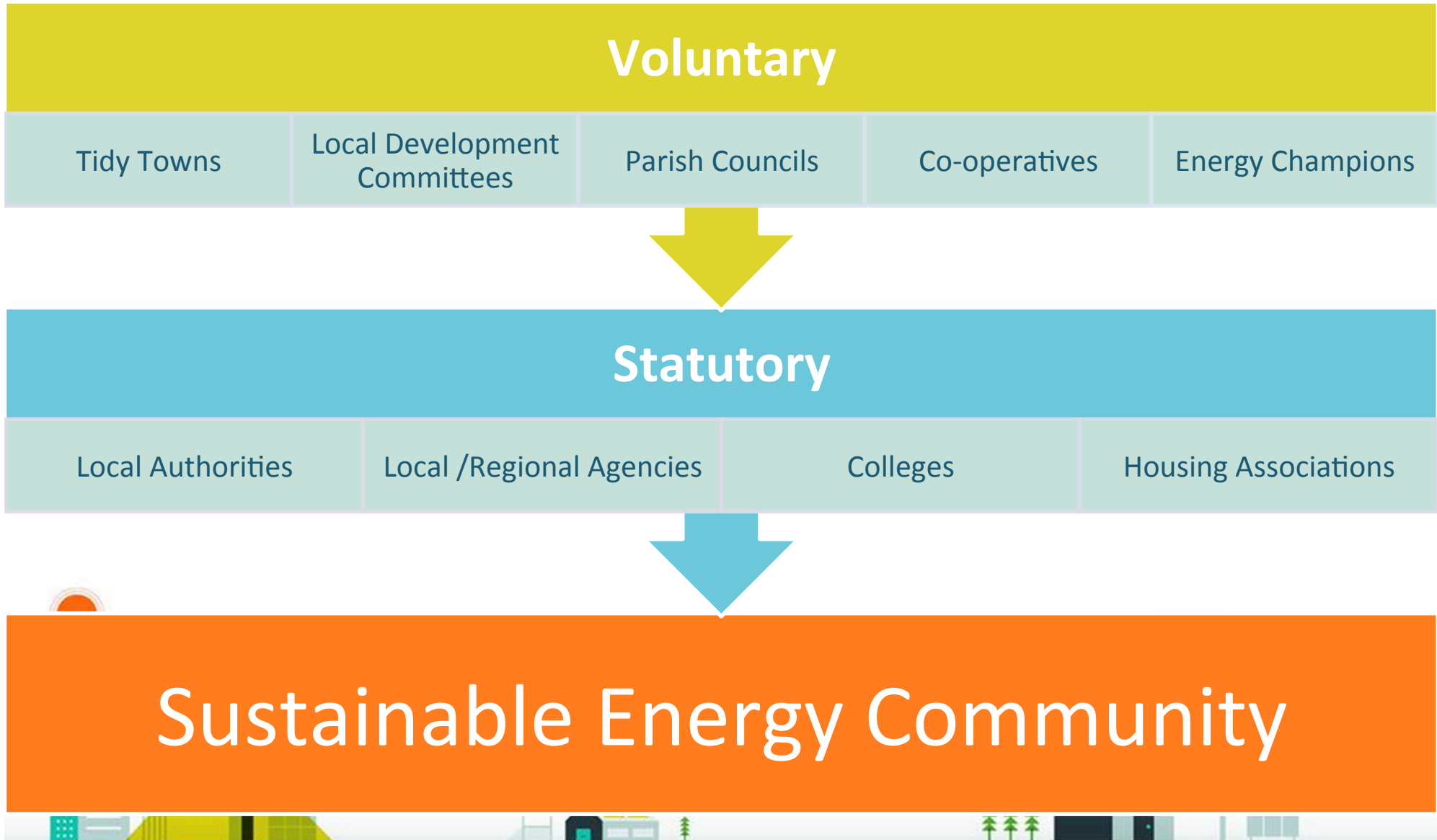
- aiming, as far as possible, to be energy efficient
- using renewable energy where feasible
- developing decentralised energy supplies



*SEAI will sign three year partnership agreements to support communities develop sustainable energy communities. SEAI will also provide technical and financial supports to communities.*



# Typical Route to Engagement



# Two Levels

1.  
SEC  
Network

Share experiences  
Events / Workshops

2.  
3 Year  
Partnership

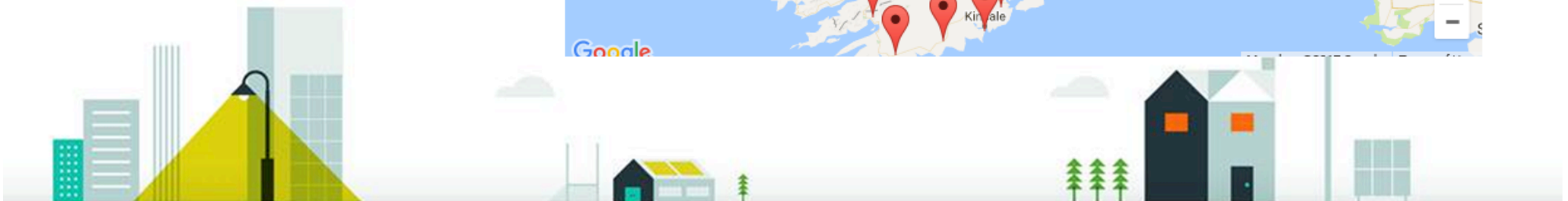
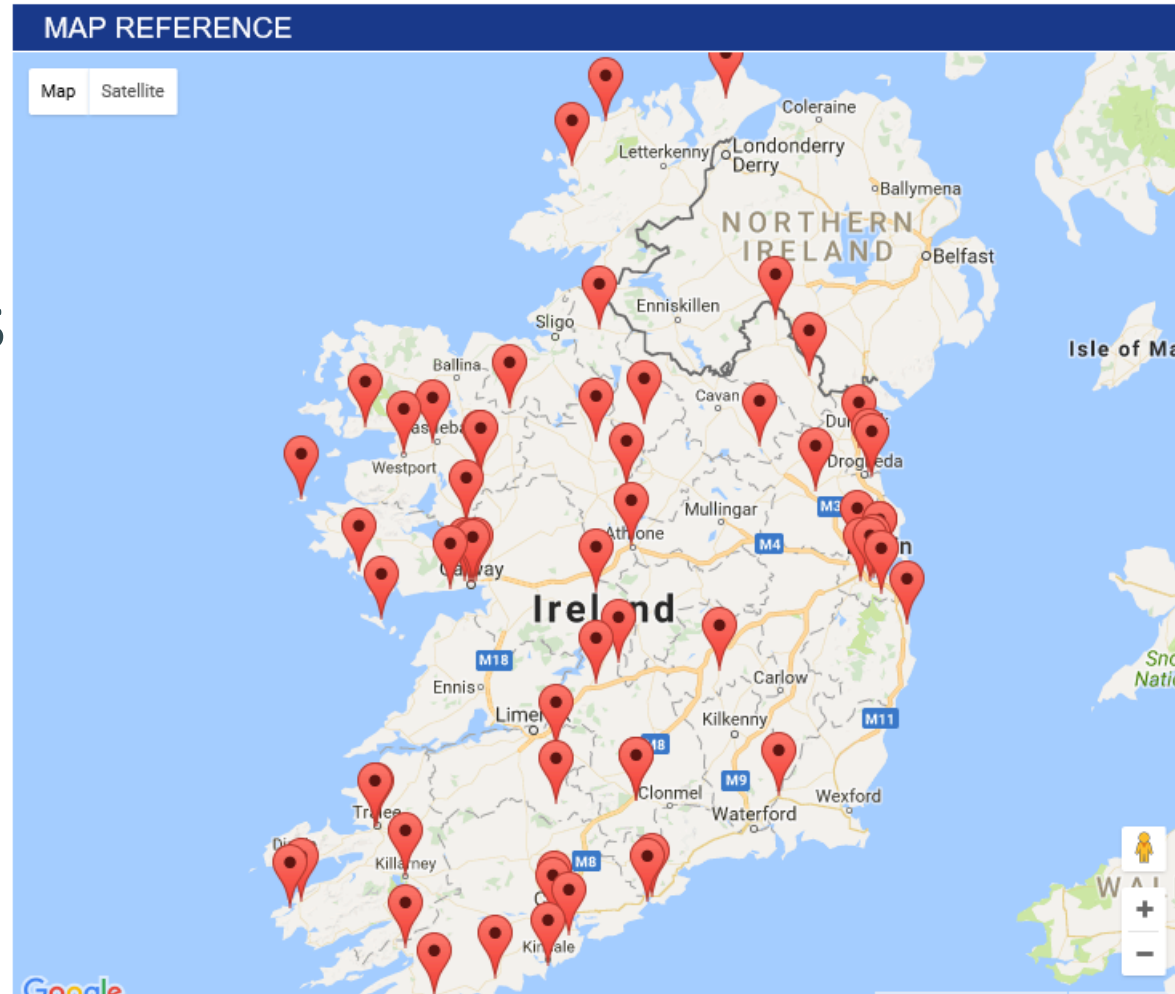
**Regional Community Mentor**

Technical Advisors  
Funding available  
Energy Master Plan  
Annual Work Plans



# Level 1 Supports

- Postcard
- Regional events
- National events
- Newsletters
- Training



# SEC Network Growth

13

End of 2015



60

End of 2016



76

Apr-17



120

Target by end 2017



- €500 Million in energy spend
- Two thirds rural

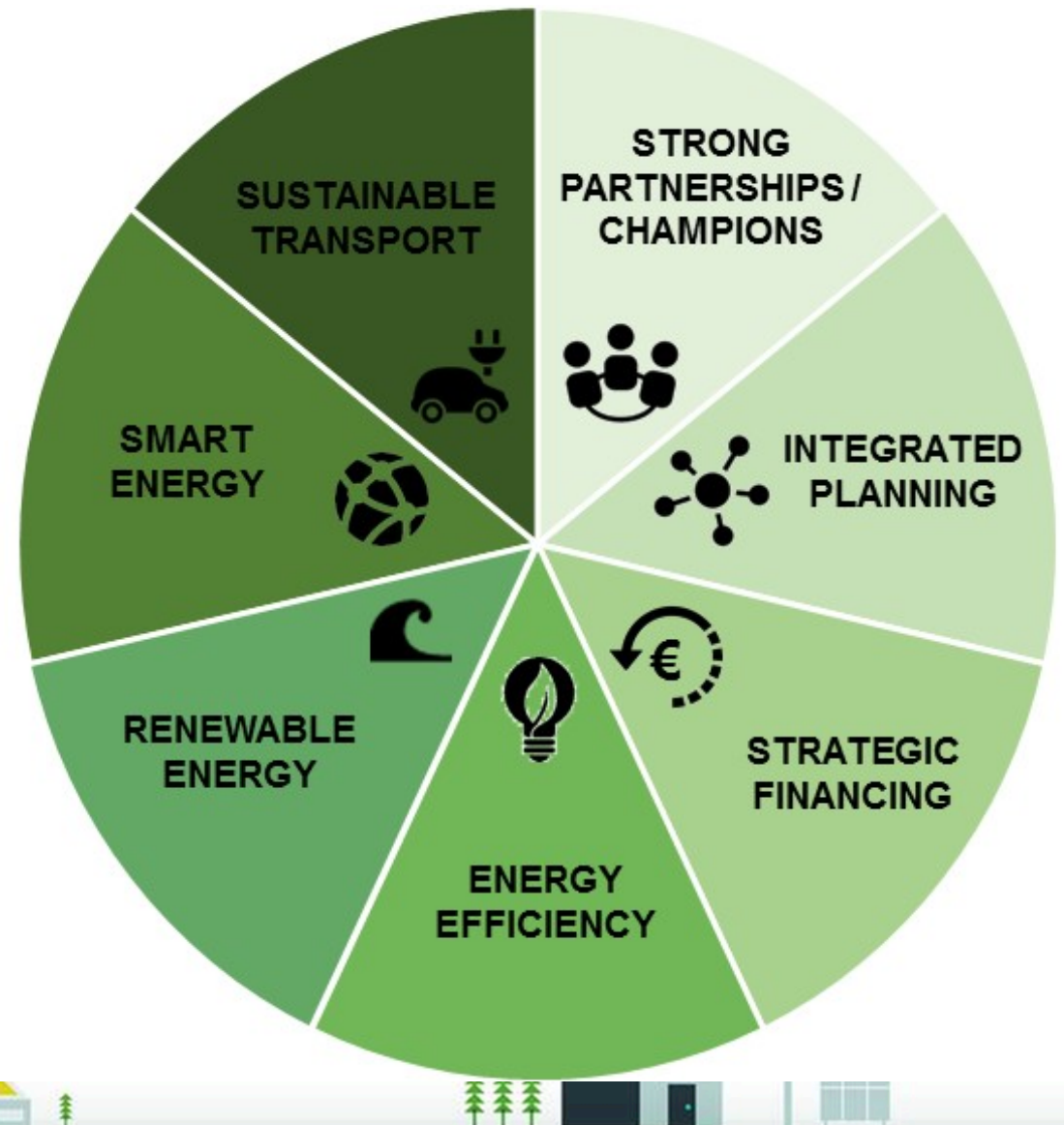
# Level 2. Supports

Year 1

Energy Master Plan  
up to €25,000

Year 2 & 3

Energy Competencies  
up to €128,000



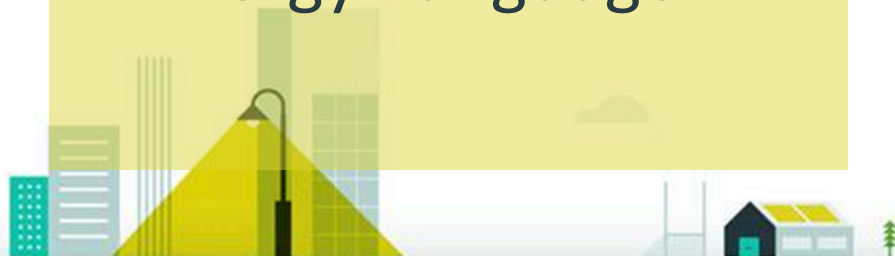
# Survey of SECs

## Challenges

- Volunteer burnout
- Running costs
- Process & procurement
- Forms
- Energy 'language'

## Successes

- Mentor support
- Relevant events
- Genuine networking
- Structured approach
- Regular updates / contact



**CHANGE**  
THE WAY YOUR  
**COMMUNITY**  
THINKS ABOUT  
**ENERGY**

JOIN US ON THIS JOURNEY  
VISIT [SEA.IE/SEC](http://SEA.IE/SEC)





**Gillian Gannon/Ruth Buggie**

**[sec@seai.ie](mailto:sec@seai.ie)**

**01-8082098 / 042 939 1524**