

# HomeSaver Scheme

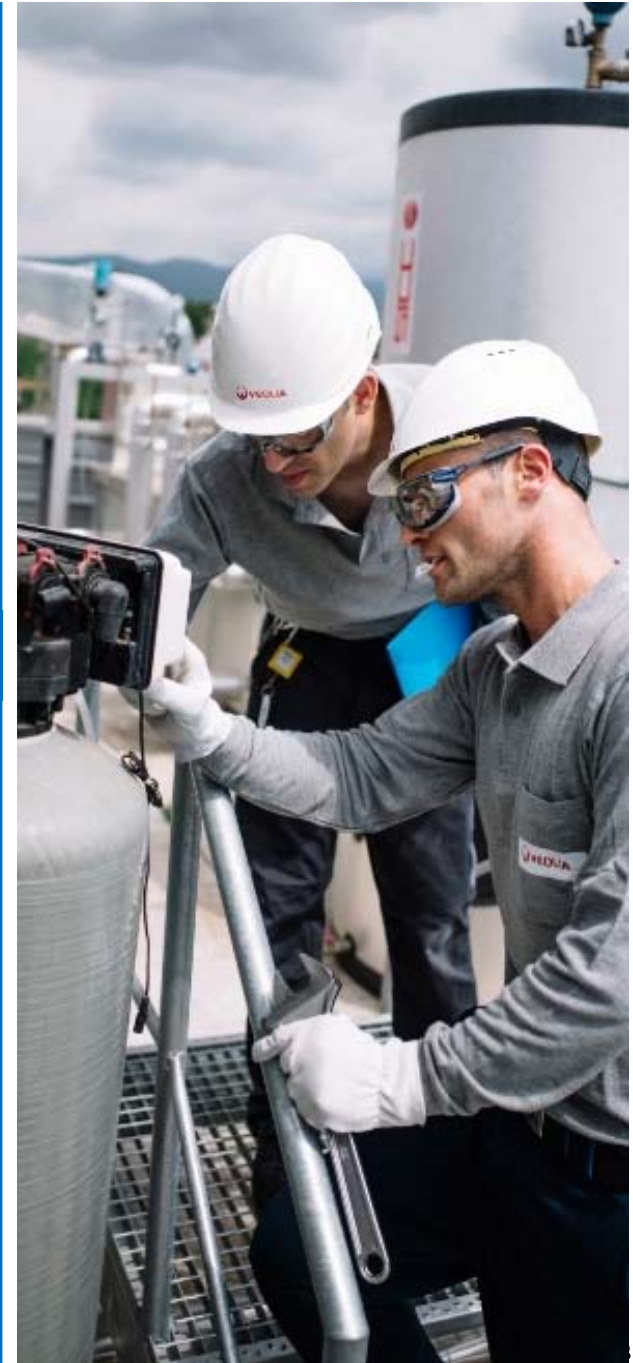
A way to make your home more energy efficient

John Lambe

**Business Development Manager**



# *ABOUT VEOLIA*



# About Veolia

## THE LARGEST ENVIRONMENTAL SERVICES COMPANY

- with revenues of **€24,39 billion** in 2016 employing **~174,000 people**
- **Major re-organization** as of mid-2013 to integrate **3 technical fields of expertise** on a regional basis
- A **reinforced focus on industrial customers**, with a new **Global Key Account approach**
- **Delivering waste, water and energy services**

## 3 COMPLEMENTARY FIELDS OF EXPERTISE:

Revenue by activity



**45% WATER – #1 Provider of water solutions**



**35% WASTE – Co/by-product valorization**



**20% ENERGY – Leading energy service company with deep operational experience**

# Three core complementary businesses with synergies to resource the world

## WATER



**3,338**  
wastewater treatment plants managed



**4,455**  
water production plants managed



**59.6**  
million people connected to wastewater systems

## ENERGY



**1,802**  
Industrial sites managed



**52**  
million MWh produced



**529**  
heating and cooling networks managed

## WASTE



**31.3**  
million tons of waste recovered as materials or energy



**655**  
waste-processing facilities operated



**730,000**  
business customers

# Decentralized organization & Market Overview



## What is the Veolia HomeSaver Scheme?

### **The HomeSaver Scheme is an Energy Efficiency Employee Salary Scheme.**

It enables Veolia employees in Ireland to apply for energy efficient measures to be fitted in their own homes.

The scheme aims to raise employees awareness of the benefits of energy efficiency.



HomeSaver is a blend of grant funding, carbon credits and an interest free loan scheme.

End to End offer with internal support to assist employees throughout all of the steps.



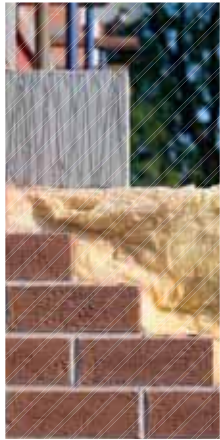
# HomeSaver efficiency measures\*



Cavity wall insulation



Attic (loft) insulation



External wall insulation



Full window replacement



Boiler upgrade



Heating controls



Solar  
(currently under review)

\* Measures ensuring the best solution for employee's homes



## The benefits - why should I apply?

**Opportunity to make home improvements**

---

**Reducing your energy bills**

---

**Value for money: Interest-free loan & SEAI Grant**

---

**Environmentally friendly initiative**

---

**Alignment with Veolia's  
company culture**



## Internal support process flow

STEP 1  
**Survey  
Questionnaire**

STEP 2  
**Energy  
assessment**

STEP 3  
**Quotation**

STEP 4  
**Employment  
agreement**  
(GO or NO GO)



STEP 5  
**Agree work  
schedules**

STEP 6  
**Installation  
phase**

STEP 7  
**BER and Quality  
Assurance**

STEP 8  
**Payment**

## How does the HomeSaver Scheme work?

### Who carries out the work?

Obligated party / Main contractor project managed by Veolia staff.

---

### Who can apply for the scheme?

All permanent Veolia employees in Ireland.

**NOTE:** The Veolia HomeSaver Scheme has **limited availability**

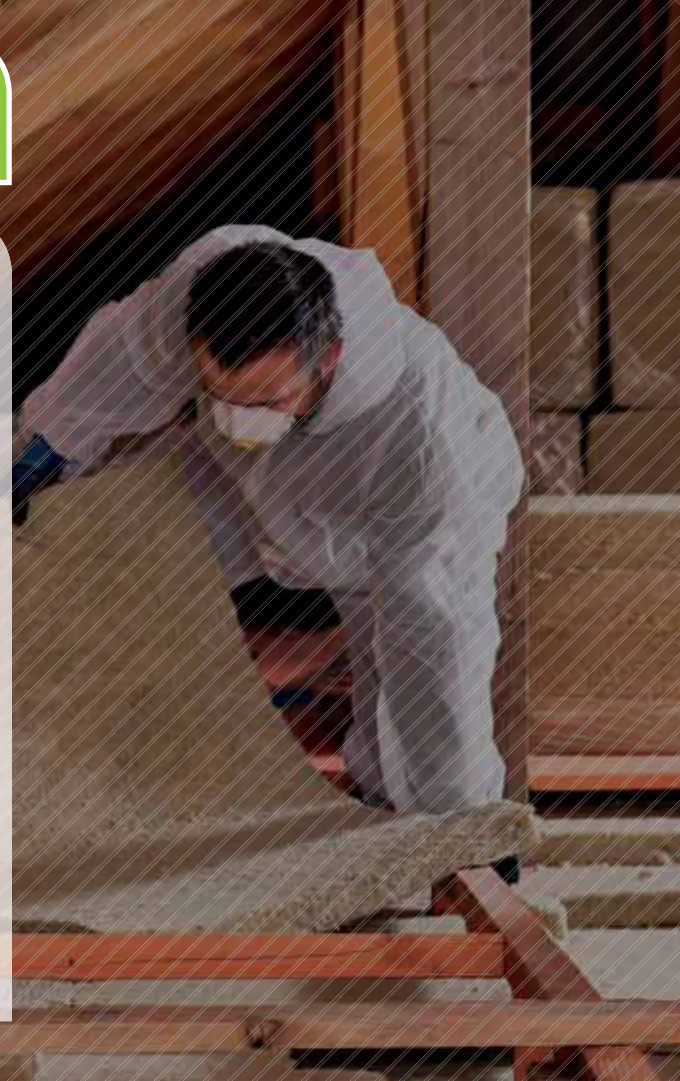
---

### What are the programme milestones?

**Application date open:** Friday 3 June 2016

**Application deadline:** Thursday 30 June 2016

**Installation phase:** July to September



# HomeSaver calculator

Saving Order	Measure	Install (Select)	Cost €	Credits €
1	Heat Pump Upgrade	No		
2	Gas Boiler upgrade / Controls	No		
3	External Wall Upgrade	No		
4	Heating Controls	Yes	1,300	3,700
5	Cavity Wall Insulation	Yes	1,500	3,250
6	Solar Thermal	No		
7	Windows	No		
8	Loft Insulation	Yes	1,100	1,300
	BER	Yes	150	0
	Cost before VAT		4,050	
	Vat		547	
	Cost after VAT		<b>4,597</b>	
	Energy Credit	18%	-825	8,250
	SEAI Grant	35%	-1,609	
	Net cost before Benefit In Kind (BIK)		2,163	
	BIK (on 4% int over 3 years)	20% tax rate	35	
	Total cost		<b>2,198</b>	
	<b>TOTAL SAVINGS</b>		<b>2,399</b>	52%

## How long to recoup your investment from the energy savings?

	€
Enter your heating bills cost	3,100
Average energy savings 30%	930
<b>NUMBER OF YEARS FOR SAVINGS TO REPAY INVESTMENT</b>	<b>2.4</b>

## Further information and next steps

### Click [here](#) to access the following:

- ✓ Webinar Slides
- ✓ HomeSaver Calculator
- ✓ FAQs
- ✓ SSE Survey Questionnaire

#### Points of Contact:



**Gerry O'Reilly**

[gerry.oreilly@veolia.com](mailto:gerry.oreilly@veolia.com)



**Paul Rea**

[paul.rea@veolia.com](mailto:paul.rea@veolia.com)

